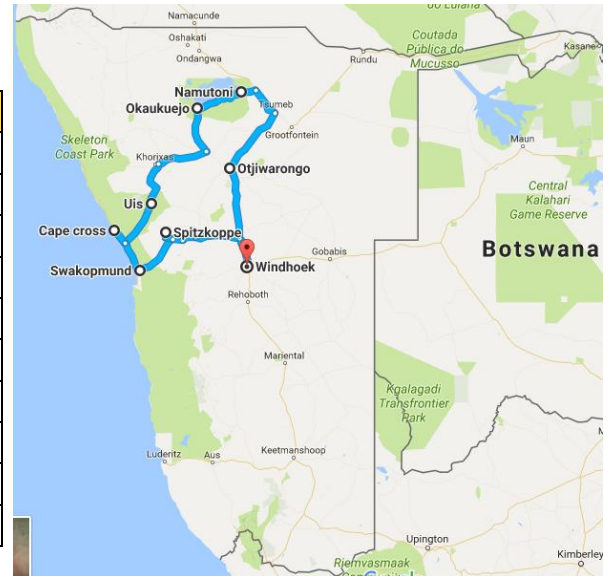


Namibia 9 nights / 10 days

The best of Central & Northern Namibia

Program Overview

Day	Highlight	Overnight
1	Arrival, Transfer to Okonjima	Okonjima
2	AfriCat Foundation	Namutoni
3	Etosha Safari	Okaukuejo
4	Free Day	Okaukuejo
5	Desert Elephant	Uis
6	Cape Cross Seal Colony	Swakopmund
7	Swakopmund choice of activities	Swakopmund
8	Swakopmund choice of activities	Swakopmund
9	Transfer to Windhoek - enroute Spitzkoppe	Windhoek
10	Departure	



Day 1 / Windhoek – Okonjima (260 km; approx. 2,5 hours)

Upon arrival at Windhoek International Airport, transfer to Okonjima. Enroute we will stop in a small local village, Okahandja, for a light lunch stop
 Check into your lodge
 Overnight Okonjima Lodge

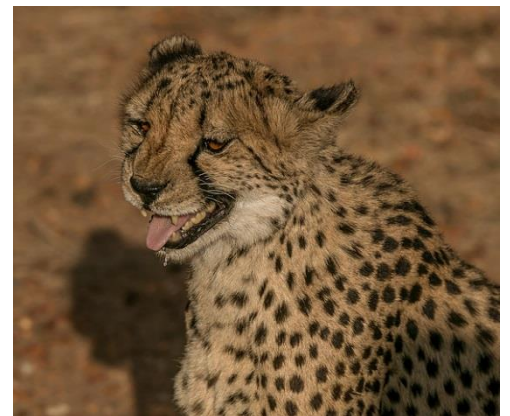
Day 2 / Okonjima – Namutoni (300 km; approx. 3,5 hours)

In the morning you will visit the AfriCat foundation. OKONJIMA is the home of The AfriCat foundation, a non-profit organisation, committed to long-term conservation of Namibia's large carnivores.

Over 1080 predators have been saved since 1993! 86% have been released back into the wild.

Both Okonjima & AfriCat are dedicated to creating conservation awareness through education; preserving habitat; promoting environmental education, research and the rehabilitation of captive carnivores.

The OKONJIMA activities include tracking rehabilitated carnivores on foot; visiting the AfriCat Carnivore Care & Information Centre; tracking leopards from a game-viewing vehicle. OKONJIMA also offers a guided Bushman Trail
 Afternoon transfer to Namutoni for overnight



Day 3 / Namutoni – Okaukuejo (135 km Full Day Safari)

Transfer from Namutoni to Okaukuejo through Etosha National Park
 Here you will experience the amazing wildlife by driving through Etosha National Park, which is Namibia’s greatest wildlife sanctuary. You will get the opportunity to see the rarest and also the most common species of Africa. The park is home to for example elephant (some of the largest in Africa), the endangered black rhino and even leopard. Lions are camouflaged in the pale- golden colour of the grasslands, while giraffes rise- high above most of the dry vegetation
 One of the unique things about the Etosha National Park is its vast, bare, salt pan. At 130 km’s long and up to 50km’s wide in places, it is comfortably the largest salt pan in Africa and is the park’s most distinctive and dramatic feature, visible even from space

Overnight lodge in Okaukuejo

Day 4 / Okaukuejo

Free day at leisure to enjoy the fantastic Okaukuejo lodge and facilities. Spend some time by the floodlit waterhole or enjoy a guided tour!

Overnight lodge in Okaukuejo

Day 5 / Okaukuejo – Uis (355 km; approx. 4,5 hours)

After breakfast and check out, transfer to Uis
 Upon arrival in Uis, check in to your accommodation and head out for a Desert Elephant drive.
 Uis is located in the Brandberg area which is popular for its unspoilt beauty and free roaming wildlife, such as the Desert Elephant, Mountain Zebra, Springbok Kudu and more. The Brandberg Mountain is the highest mountain in Namibia (2573m)
 The Desert Elephant is a source of great interest, although not a separate species, and not much different from other savannah elephants, Namibia’s desert-dwelling elephants are special nonetheless. They are of high national and international conservation priority, and have been



designated as top priority for protection by the IUCN. They have adapted to their dry, semi-desert environment by

having a smaller body mass with proportionally longer legs and seemingly larger feet than other elephants. Their physical attributes allow them to cross miles of sand dunes to reach water. There are only 2 groups of Desert Elephants in the world, 1 group in Mali and the other right here in the Brandberg region

The Desert Elephant is a free animal and we can therefore not guarantee seeing them, we will however try our best by driving the area in search of them

Overnight Brandberg Rest Camp or similar

Day 6 / Uis – Cape Cross – Swakopmund (280 km; approx. 3,5 hours)

After breakfast and check out transfer to Swakopmund. We will take a slight de-tour to visit Cape Cross on the Skeleton Coast of Namibia. This is the only place in the world where you can find the Cape Fur Seal. They fight, mate, reproduce and fish in the Cape Cross Seal Reserve, the largest breeding colony of these seals on the planet, with at times up to 210,000 seals present

After the stop at Cape Cross transfer to Swakopmund

Overnight Swakopmund

Day 7 / Swakopmund

Today is free at your leisure to enjoy the various activities Swakopmund offers

Swakopmund is often referred to as the Adventurer's Paradise, beautifully nestled between the beach and the Namib Desert which is the oldest desert in the world

Overnight Swakopmund

Day 8 / Swakopmund

Today is free at your leisure to enjoy the various activities Swakopmund offers

Overnight Swakopmund



Day 9 / Swakopmund – Spitzkoppe – Windhoek (430 km; approx. 5 hours)

After breakfast and check out transfer to Windhoek. We will take a slight de-tour to visit breathtaking Spitzkoppe. The Spitzkoppe is a group of bald granite peaks or inselbergs. The granite is more than 120 million years old and the highest outcrop rises about 1784m above sea level. The peaks stand out dramatically from the flat surrounding plains. The diverse and breath-taking landscapes will force your mind to think in vast stretches of time.

From Spitzkoppe carry on to Windhoek, the capital of Namibia.

Overnight Windhoek

Day 10 / Departure

Sadly it's time to say goodbye to Namibia. Transfer to Windhoek International Airport for your departure flight.



Included in price:

- Private vehicle and driver-guide as per program
- 1 night accommodation in Okonjima including Breakfast and Dinner
- 1 night accommodation in Namutoni including Breakfast
- 2 nights accommodation in Okaukuejo including Breakfast
- 1 night accommodation in Uis including Breakfast
- Desert Elephant safari
- 3 nights accommodation in Swakopmund including Breakfast
- 1 night accommodation in Windhoek including Breakfast

Excluded in price:

- Travel Insurance
- Medical Insurance
- All meals not stated in above inclusions
- Activities apart from Desert Elephant