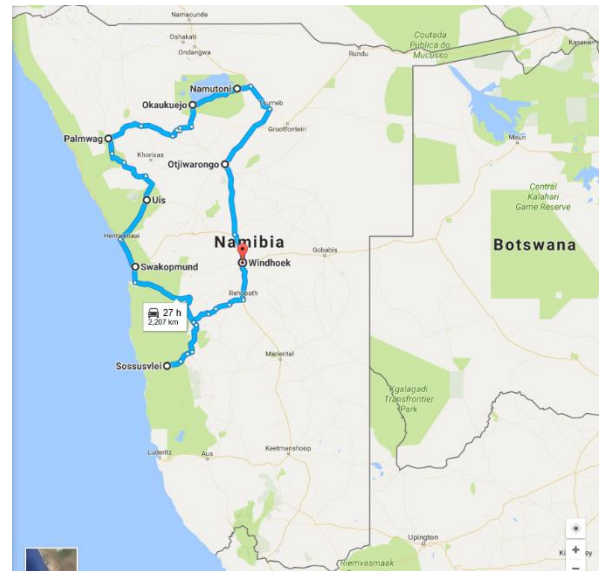


Highlights of Namibia 14 nights / 15 days

Program Overview

Day	Highlight	Overnight
1	Arrival, Transfer to Okonjima	Okonjima
2	AfriCat Foundation	Namutoni
3	Etosha Safari	Okaukuejo
4	Free Day	Okaukuejo
5	Palmwag Lodge	Palmwag
6	Transfer to Uis - Desert Elephant	Uis
7	Uis to Swakopmund	Swakopmund
8	Swakopmund choice of activities	Swakopmund
9	Swakopmund choice of activities	Swakopmund
10	Transfer from Swakopmund to Sossusvlei	Sossusvlei
11	Guided tour to Sossusvlei and Deadvlei	Sossusvlei
12	Sossusvlei choice of activities	Sossusvlei
13	Guided tour of Sessriem Canyon	Sossusvlei
14	Transfer from Sossusvlei to Windhoek	Windhoek
15	Departure	

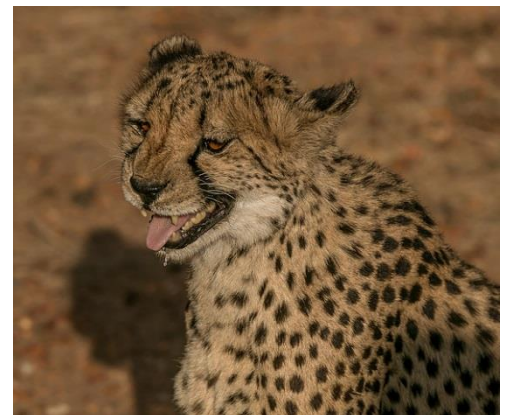


Day 1 / Windhoek – Okonjima (260 km; approx. 2,5 hours)

Upon arrival at Windhoek International Airport, transfer to Okonjima. Enroute we will stop in a small local village, Okahandja, for a light lunch stop
Check into your lodge
Overnight Okonjima Lodge

Day 2 / Okonjima – Namutoni (300 km; approx. 3,5 hours)

In the morning you will visit the AfriCat foundation. OKONJIMA is the home of The AfriCat foundation, a non-profit organisation, committed to long-term conservation of Namibia's large carnivores. Over 1080 predators have been saved since 1993! 86% have been released back into the wild. Both Okonjima & AfriCat are dedicated to creating conservation awareness through education; preserving habitat; promoting environmental education, research and the rehabilitation of captive carnivores. The OKONJIMA activities include tracking rehabilitated carnivores on foot; visiting the AfriCat Carnivore Care & Information Centre; tracking leopards from a game-viewing vehicle. OKONJIMA also offers a guided Bushman Trail
Afternoon transfer to Namutoni for overnight



Day 3 / Namutoni – Okaukuejo (135 km Full Day Safari)

Transfer from Namutoni to Okaukuejo through Etosha National Park

Here you will experience the amazing wildlife by driving through Etosha National Park, which is Namibia's greatest wildlife sanctuary. You will get the opportunity to see the rarest and also the most common species of Africa. The park is home to for example elephant (some of the largest in Africa), the endangered black rhino and even leopard. Lions are camouflaged in the pale- golden colour of the grasslands, while giraffes rise- high above most of the dry vegetation. One of the unique things about the Etosha National Park is its vast, bare, salt pan. At 130 km's long and up to 50km's wide in places, it is comfortably the largest salt pan in Africa and is the park's most distinctive and dramatic feature, visible even from space

Overnight lodge in Okaukuejo

Day 4 / Okaukuejo

Free day at leisure to enjoy the fantastic Okaukuejo lodge and facilities. Spend some time by the floodlit waterhole!

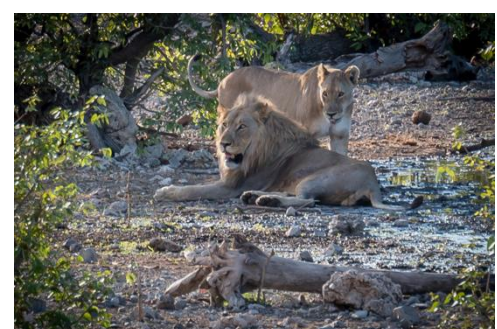
Overnight lodge in Okaukuejo

Day 5 / Okaukuejo – Palmwag Lodge (310 km; approx. 4 hours)

After breakfast and check out transfer to Palmwag Lodge. Today is a free day at your leisure to experience the amazing services Palmwag Lodge offers. The services include AM or PM Game Drives, Swimming Pool, Fully Licenced Bar and Guided Walks

Palmwag Lodge is a vacation opportunity with a difference. The predator population is the largest outside of the Etosha National Park, with over 100 lions, cheetah, leopard, brown and spotted hyena. Bird life is prolific and diverse with most of Namibia's endemics present

Its spectacular surroundings harbour the famous desert elephant, the rare black rhino, giraffe, zebra, gemsbok and many other wild animal species.



If you are lucky you will get a close encounter with the elephant, Jimbo, as he is known to stroll around the pool area and the lodge.

Day 6 / Palmwag – Uis (250 km; approx. 3,5 hours)

After breakfast and check out transfer to Uis

Upon arrival in Uis, check in to your accommodation and head out for a Desert Elephant drive

Uis is located in the Brandberg area which is popular for its unspoilt beauty and free roaming wildlife, such as the Desert Elephant, Mountain Zebra, Springbok Kudu and more. The Brandberg Mountain is the highest mountain in Namibia (2573m)

The Desert Elephant is a source of great interest, although not a separate species, and not much different from other savannah elephants, Namibia's desert-dwelling elephants are special nonetheless. They are of high national and international conservation priority, and have been designated as top priority for protection by the IUCN. They have adapted to their dry, semi-desert environment by having a smaller body mass with proportionally longer legs and seemingly larger feet than other elephants. Their physical attributes allow them to cross miles of sand dunes to reach water. There are only 2 groups of Desert Elephants in the world, 1 group in Mali and the other right here in the Brandberg region

The Desert Elephant is a free animal and we can therefore not guarantee seeing them, we will however try our best by driving the area in search of them

Overnight Brandberg Rest Camp or similar

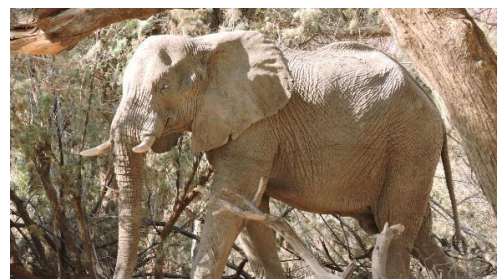
Day 7 / Uis – Swakopmund (200 km; approx. 2,5 hours)

After breakfast and check out transfer to Swakopmund. The rest of the day is free at your leisure. Swakopmund is often referred to as the Adventurer's Paradise, beautifully nestled between the beach and the Namib Desert which is the oldest desert in the world

Overnight Swakopmund

Day 8 / Swakopmund

Today is free at your leisure to enjoy the various activities Swakopmund offers



Overnight Swakopmund

Day 9 / Swakopmund

Today is free at your leisure to enjoy the various activities Swakopmund offers

Overnight Swakopmund

Day 10 / Swakopmund – Sossusvlei (410 km; approx. 5,5 hours)

After breakfast and check out transfer to Sossusvlei. We will make a short stop enroute in Solitaire for refreshments
Upon arrival in Sossusvlei, check in to your accommodation and enjoy the rest of the day free at leisure

Overnight Sossusvlei

Day 11 / Sossusvlei & Deadvlei

An early start from the Lodge to enter the Namib-Naukluft Park at sunrise, while the temperature is still mild and when the dune contrasts are at their best. You will travel with your own specially trained guide who will share all his knowledge of the area, animals, plant life and much more with you
Regular stops are made on the spectacular 60km drive through the dune corridor down to the Vlei to gain information or take in the vistas. At Dune 45, we make a stop to view the world's most photographed dune. Further along, a gradual 2,6km round trip guided walk up to Dead Vlei is a must for the healthy visitors. The more energetic have the opportunity to climb the upper ridge of Big Daddy Dune, one of the highest sand dunes in this area! We spend time exploring Sossusvlei before returning to the lodge approx. 5,5 hours later in time for lunch
The rest of the day is free at your leisure

Overnight Sossusvlei



Day 12 / Sossusvlei

Today is a free day at your leisure. Enjoy your lodge and facilities, or perhaps you'd like to use the opportunity and go on a Hot Air Balloon ride over the magnificent dunes of Sossusvlei?

Overnight Sossusvlei



Day 13 / Sesriem Canyon

Today you will enjoy the remarkable depths of Sesriem Canyon. Our experienced guides will share the history behind this magnificent natural canyon carved by the Tsauchab River. Sesriem Canyon is located approx. 4.5 km from the entrance gate of the Namib-Naukluft Park. The Tsauchab River has shaped the Canyon over millions of years and it is one of the few places in the area that holds water all year round.



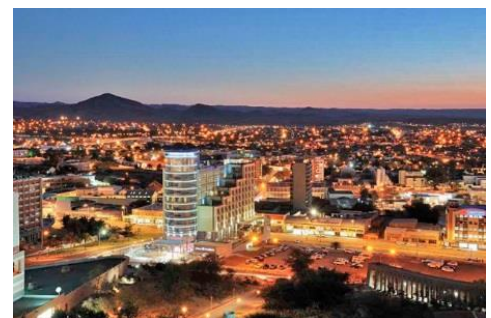
The rest of the day is free at your leisure.

Overnight Sossusvlei

Day 14 / Sossusvlei – Windhoek (400 km; approx. 5,5 hours)

After breakfast and check out, transfer to Windhoek. Windhoek is the capital, and the largest city, in Namibia. Windhoek is the social, economic, political and cultural center of the country. Nearly every Namibian national enterprise, governmental body, educational and cultural institution is headquartered here.

Enjoy the afternoon free at your leisure in Windhoek.



Overnight Windhoek

Day 15 / Departure

Sadly it's time to say goodbye to Namibia. Transfer to the airport for your departure flight.

Included in price:

- Private vehicle and driver-guide as per program
- 1 night accommodation in Okonjima including Breakfast and Dinner
- 1 night accommodation in Namutoni including Breakfast
- 2 nights accommodation in Okaukuejo including Breakfast
- 1 night accommodation in Palmwag including Breakfast and Dinner
- 1 night accommodation in Uis including Breakfast
- Desert Elephant safari
- 3 nights accommodation in Swakopmund including Breakfast
- 4 nights accommodation in Sossusvlei Lodge including Breakfast and Dinner
- Sesriem Canyon Excursion
- Sossusvlei & Deadvlei Excursion
- 1 night accommodation in Windhoek including Breakfast

Excluded in price:

- Travel Insurance
- Medical Insurance
- All meals not stated in above inclusions
- Activities not stated in above inclusions